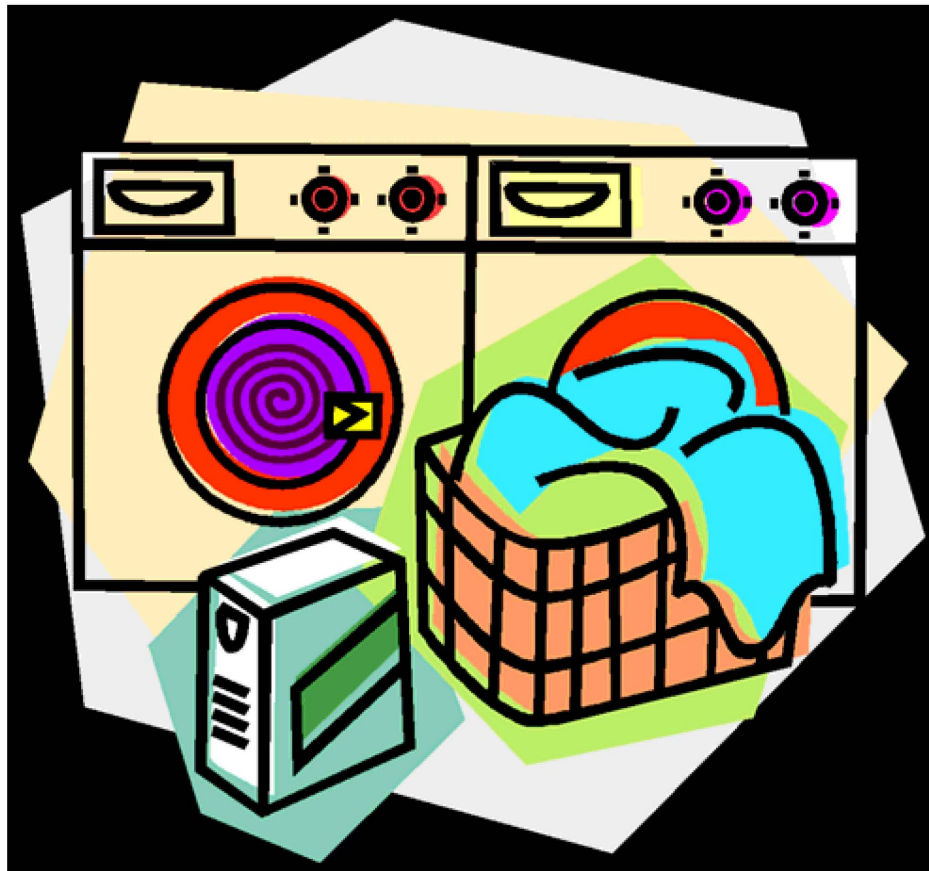


Laundry Machine Instructions

**FOR WHEN YOU NEED TO
WASH CLOTHES**



How to Use The Washer and Dryer

General Safety Tips

- Never let children play on, near, or inside of laundry equipment.
- Make sure combustible items are not left on top of or near laundry equipment.
- Never mix chlorine bleach with ammonia or acids such as vinegar as this could form a toxic gas that could result in death.
- Never insert clothes that have been exposed to combustible chemicals such as gasoline or cooking oil into your washer or dryer.
- Always read and follow the directions written on the tags of your clothing items to be washed and dried.
- NEVER allow machines to run while unattended.

Washer

- Step 1) Add washing detergent and fabric softener in the directed location
- Step 2) Select the wash cycle dependent on the type of clothing
- Step 3) Start the cycle so the drum will begin to fill with water.
- Step 4) Add clothing evenly in the drum of the washer after about 1/3 filled with water.
- Step 5) Close the lid of the washer and let washer complete washing cycle.
- Step 6) After cycle is completed, lift lid and remove contents.
- Step 7) If bleach cleaning solution was used, run the wash cycle again before loading clothes into the unit again.

Dryers

- Step 1) Check lint trap and remove any lint
- Step 2) Load clothing into dryer cylinder
- Step 3) Add dryer sheet (if wanted)
- Step 4) Select cycle appropriate for type of clothes
- Step 5) Begin cycle and allow cycle to complete
- Step 6) Remove load from dryer, using caution as metals on clothing may be extremely hot
- Step 7) Check the lint trap and remove any lint that may be present, failure to do this may cause a fire.

Frequent Problems and Causes

- The washer shakes excessively while spinning
 - clothing was not evenly distributed when loaded
- Clothes are dripping wet out of the washer
 - an incorrect spin cycle was used or washer was overfilled
 - run another spin cycle only
- Colored spots on clothing
 - incorrect use of fabric softener, or not sorting clothes correctly
- Clothes do not come out smelling clean
 - washer was overloaded
- Too many suds
 - too much detergent was used
 - make sure to run an empty cycle before reloading washer
- Empty the dryer lint trap before each use so that clothes dry faster and no over-heating of the unit.

Who do I contact when there is a problem with a unit?

Submit a Fix It ticket online through your building's Handbook link on the Housing website.

Or email us at housing@umn.edu

